

Loews Kansas City Hotel

Opening Spring 2020. Experience a breath of refreshing hospitality and be just steps away from exciting dining, shopping and entertainment options in a re-energized downtown Kansas City.

1515 Wyandotte Street
Kansas City, MO 64108
816.897.7070
[loewshotels.com/
loews-kansas-
city-hotel](http://loewshotels.com/loews-kansas-city-hotel)

Getting Here

Kansas City International Airport:
25 minute drive

Rooms and Suites

800 guestrooms including:

- 380 rooms with king beds
- 373 rooms with two queen beds

47 luxury suites including:

- One presidential suite
- Four executive suites
- 17 corner suites
- 19 grand suites
- Six studio suites

Meetings and Events

Approximately 60,000 sq. ft. of function space, including 22 meeting and banquet rooms, three boardrooms, 6,000 sq ft of outdoor terrace, and the largest hotel ballroom in the city.

Private dining events available at hotel restaurant, up to 270 guests.

Dining and Entertainment

Lobby Bar

A gathering place for locals and visitors before a night on the town. Enjoy dramatic northern views of the city with floor-to-ceiling windows.

Hotel Restaurant

Open-concept restaurant with wraparound balcony that overlooks downtown and the Power & Light District.

Second Restaurant

Specialty restaurant with street-level access

Flavor by Loews Hotels:

Eating Like a Local Made Easy

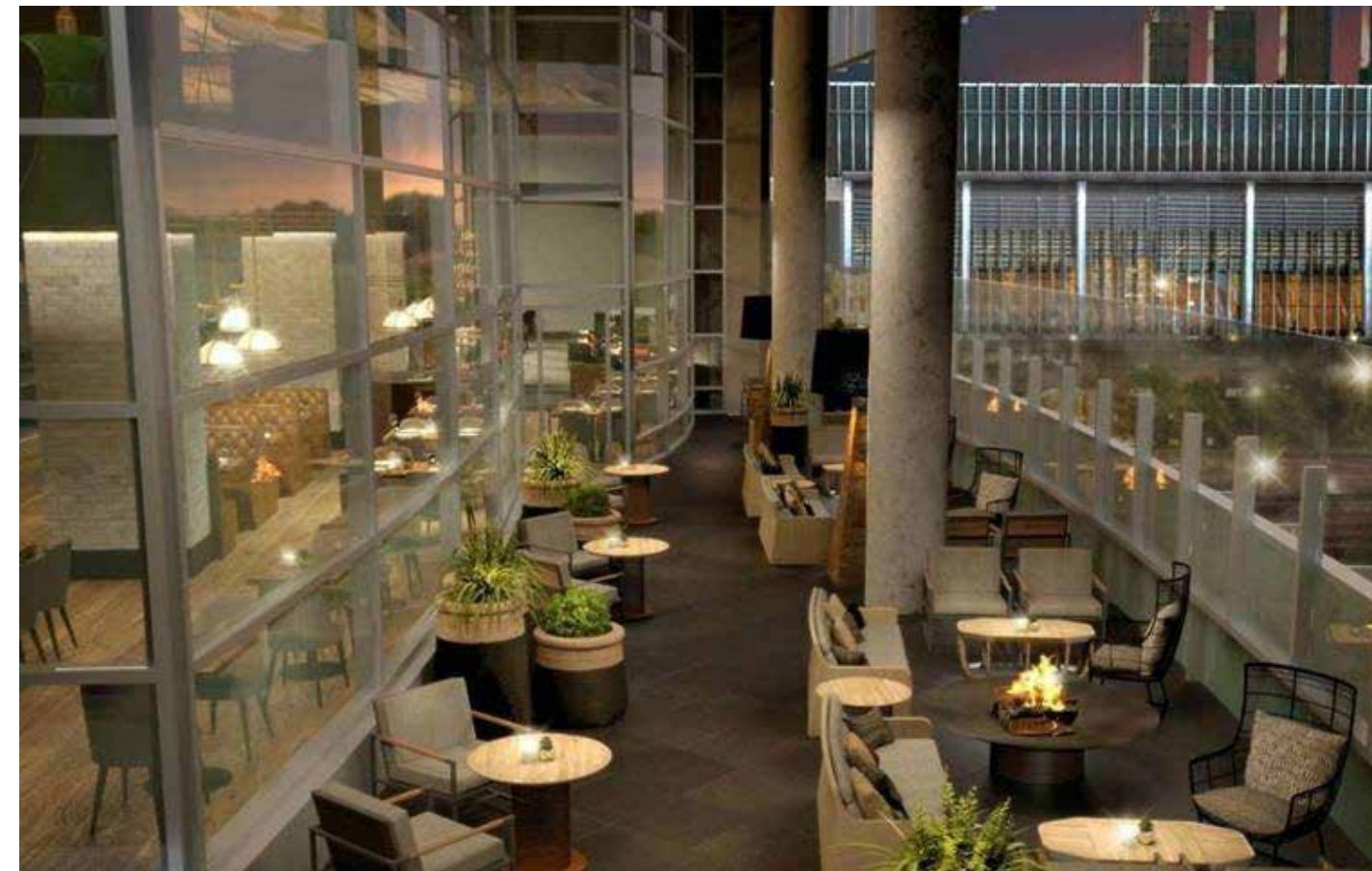
We've brought the local food scene to you by partnering with some of our favorite neighborhood food and drink artisans. Serving it up fresh, right here in the hotel.

Things to Do

- State-of-the-art fitness center
- Luxury spa with 5 treatment rooms
- Indoor lap pool
- Walking distance to Kansas City Power & Light District, Sprint Center, KC Streetcar and the Kauffman Center for the Performing Arts

At Your Service

- Business center
- 24-hour room service
- High-speed internet access
- Valet and self-parking
- Connector bridge to the Kansas City Convention Center
- Chat Your Service: Need a restaurant reservation or the AC turned up? Just text us and we've got you covered.



From top: terrace, City Beautiful Ballroom prefunction

KANSAS CITY

LOEWS
HOTELS



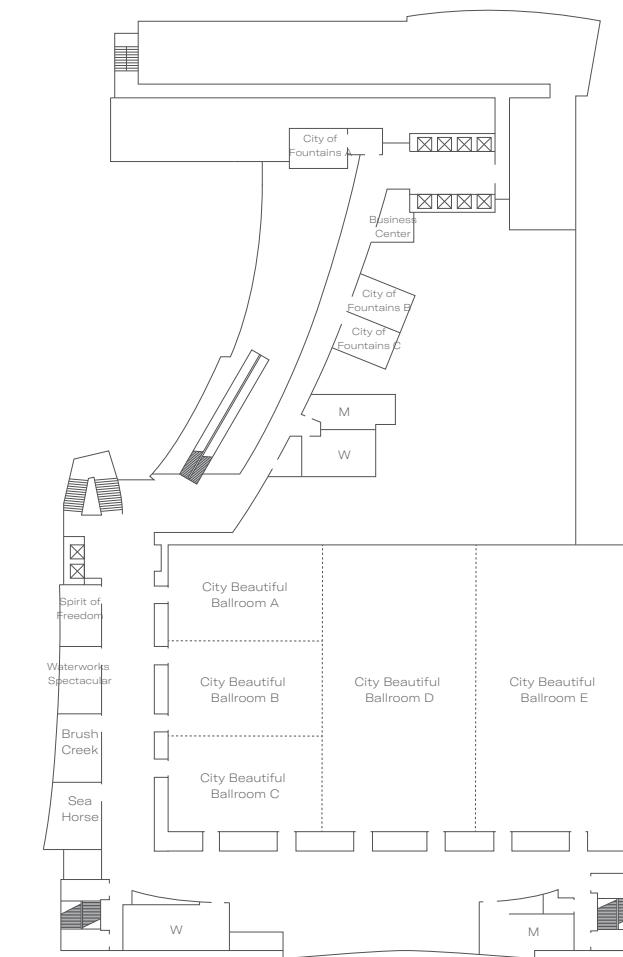
Clockwise from top: City Beautiful Ballroom banquet set, king guestroom, exterior

Meeting Space

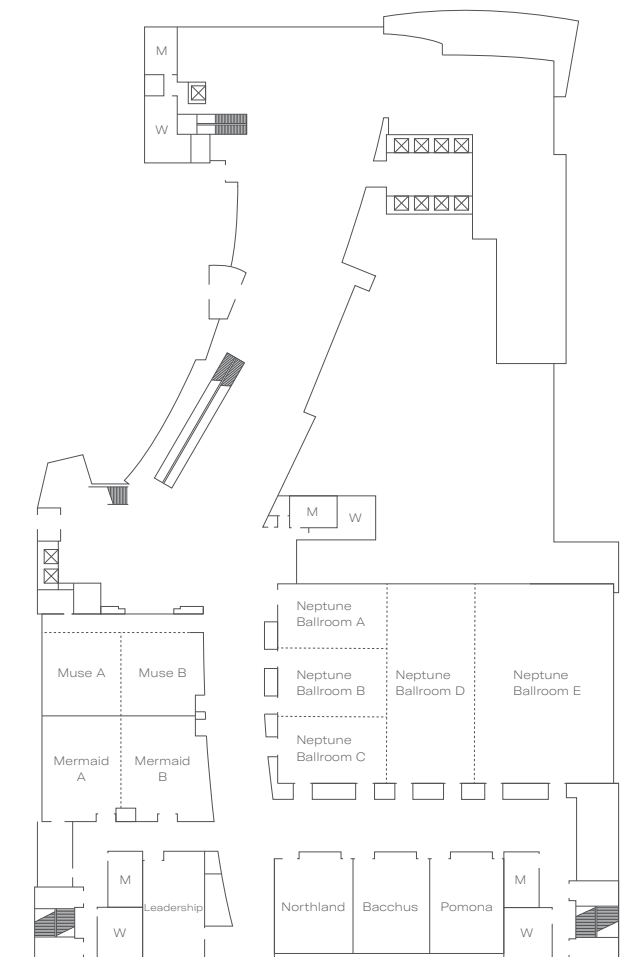
Room	Dimensions (Ft.)	Sq. Ft.	Theater	Rounds of 8	Classroom	Boardroom	Reception	U-Shape	Crescent Rounds	Hollow Square
Junior Ballroom Level										
Neptune Ballroom	147 x 88	13,012	1,446	1,084	867	310	1,301	372	765	310
Prefunction (Jr Ballroom Level)	--	9,701	--	808	--	--	970	--	--	--
Neptune Ballroom A	46 x 29	1,346	150	112	90	32	135	38	79	32
Neptune Ballroom B	47 x 30	1,418	158	118	95	34	142	41	83	34
Neptune Ballroom C	47 x 29	1,397	155	116	93	33	140	40	82	33
Neptune Ballroom D	88 x 38	3,297	366	275	220	79	330	94	194	79
Neptune Ballroom E	88 x 62	5,473	608	456	365	130	456	156	322	130
Muse (A-B)	68 x 35	2,419	269	202	161	58	242	69	142	58
Muse A	36 x 33	1,263	140	105	84	30	126	36	74	30
Muse B	36 x 32	1,156	128	96	77	28	116	33	68	28
Mermaid (A-B)	68 x 46	3,149	350	262	210	75	315	90	185	75
Mermaid A	46 x 33	1,511	168	126	101	36	151	43	89	36
Mermaid B	46 x 35	1,638	182	137	109	39	164	47	96	39
Leadership	45 x 25	1,134	126	95	76	27	113	32	67	27
Northland	43 x 34	1,470	163	123	98	35	147	42	86	35
Bacchus	42 x 34	1,429	159	119	95	34	143	41	84	34
Pomona	43 x 33	1,400	156	117	93	33	140	40	82	33

Room	Dimensions (Ft.)	Sq. Ft.	Theater	Rounds of 8	Classroom	Boardroom	Reception	U-Shape	Crescent Rounds	Hollow Square
Ballroom Level										
City Beautiful Grand Ballroom	214 x 126	27,119	3,013	2,260	1,808	646	2,712	775	1,595	646
Prefunction (Ballroom level)	--	11,069	1,230	922	738	264	1,107	316	651	264
City Beautiful Ballroom A	88 x 34	3,020	336	252	201	72	302	86	178	72
City Beautiful Ballroom B	88 x 33	2,892	321	241	193	69	289	83	170	69
City Beautiful Ballroom C	126 x 70	2,897	322	241	193	69	290	83	170	69
City Beautiful Ballroom D	126 x 70	8,837	982	736	589	210	884	252	520	210
City Beautiful Ballroom E	126 x 73	9,329	1,037	777	622	222	933	267	549	222
Spirit of Freedom	32 x 13	420	47	35	28	10	42	12	25	10
Waterworks Spectacular	38 x 13	489	54	41	33	12	49	14	29	12
Brush Creek	37 x 15	552	61	46	37	13	55	16	32	13
Sea Horse	36 x 17	626	70	52	42	15	63	18	37	15
City of Fountains Boardroom A	27 x 22	577	64	48	38	14	58	16	34	14
City of Fountains Boardroom B	24 x 16	390	43	33	26	9	39	11	23	9
City of Fountains Boardroom C	24 x 17	410	46	34	27	10	41	12	24	10

Room	Dimensions (Ft.)	Sq. Ft.	Theater	Rounds of 8	Classroom	Boardroom	Reception	U-Shape	Crescent Rounds	Hollow Square
Additional Function Space (Studio Suites)										
Basin		500								
Waterfall		500								
Spring		500								
Power and Light		700								
18th and Vine		700								
Meeting Suite (ADA)		500								



Ballroom Level



Junior Ballroom Level