

# Loews Miami Beach Hotel

Experience elevated comfort and sophisticated style in the heart of South Beach's vibrant Art Deco District at our newly redesigned, iconic oceanfront resort.

1601 Collins Avenue  
Miami Beach, FL 33139  
305.604.1601  
[loewsmiami.com](http://loewsmiami.com)

## Getting Here

Miami International Airport: 20 minutes

Fort Lauderdale-Hollywood International Airport: 35 minutes

## Rooms and Suites

790 guestrooms, including 67 suites and two dual-story presidential suites.

## Meetings and Events

65,000 square feet of flexible indoor and outdoor, state-of-the-art meeting space, including the Americana Ballroom, Poinciana Ballroom and 21 additional meeting rooms, salons and parlors.

## Dining and Entertainment

### Preston's Market

Farm-to-table, locally sourced American cuisine with an international flare.

### Bar Collins

Casual dining and curated cocktails by renowned mixologist Julio Cabrera.

### Lure Fishbar

Award-winning seafood, standout steaks and refreshing cocktails in a luxury yacht inspired setting.

### Nautilus

Poolside bar and grill with service to the pool, cabanas and beach.

### Miami Joe Coffee Co.

Our new grab and go restaurant serving coffee, pastries, sandwiches, salads, locally churned ice cream and more.

## Flavor by Loews Hotels:

### Eating Like a Local Made Easy

We've brought the local food scene to you by partnering with some of our favorite neighborhood food and drink artisans. Serving it up fresh, right here in the hotel.

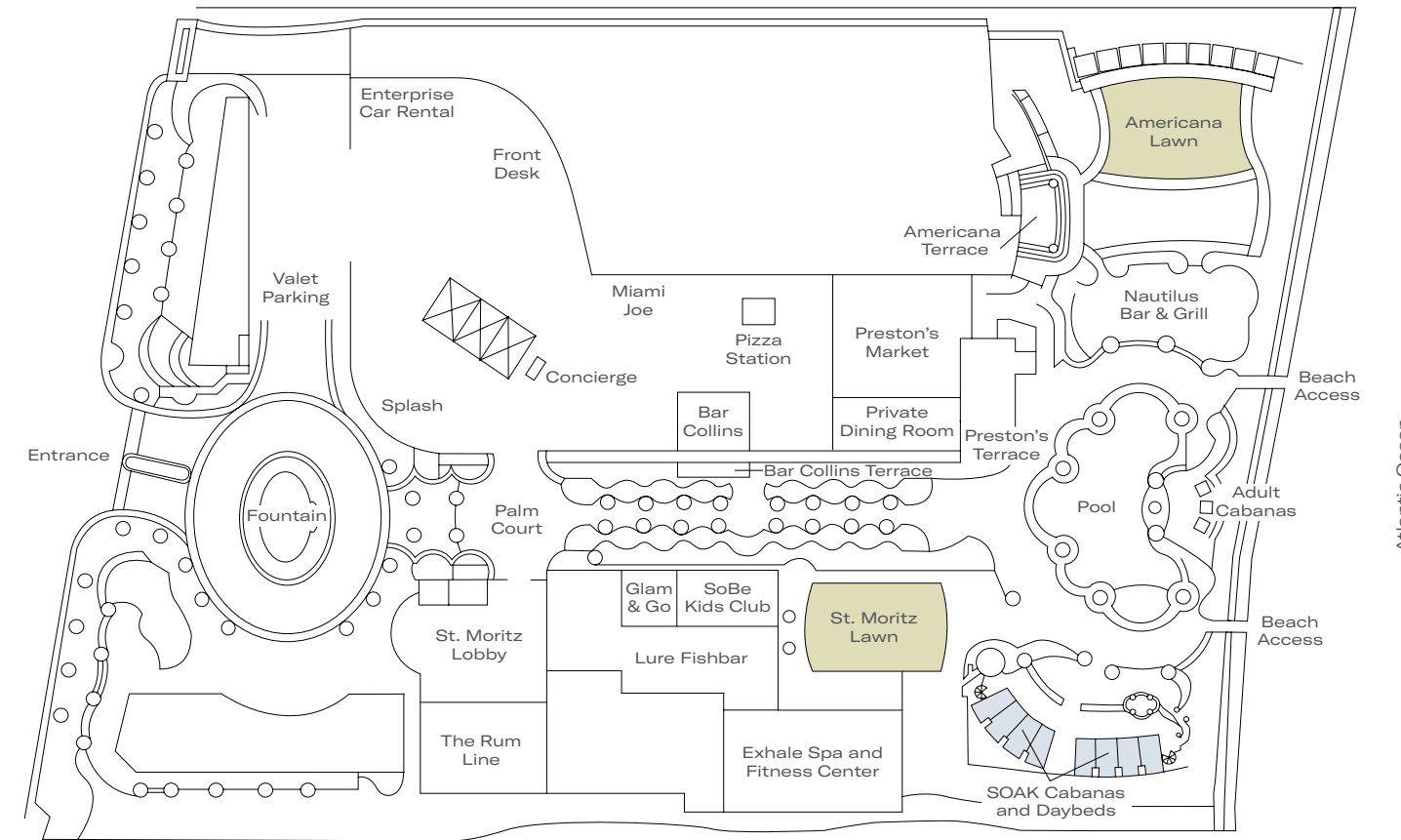
## Things to Do

- Redesigned oceanfront poolscape with private beach access
- SOAK cabanas and daybeds
- Boucher Brothers Management providing beach, water sport and large corporate group event services
- Luxury yacht rentals with Biscayne Lady showcasing the Miami Beach skyline and waters for unique group activities
- Exhale South Beach spa, mind and body studio and fitness center
- Steps from Lincoln Road and Ocean Drive

## At Your Service

- Full service FedEx business center
- On-site A/V rentals, staging and production services through PSAV
- Destination management services with 360 Destination Group, providing event coordination, décor, off-property activity options and more
- Coastal Car Worldwide premier transportation services
- Enterprise car rental office
- High-speed internet access
- Chat Your Service: need a restaurant reservation or the AC turned up? Just text us and we've got you covered.

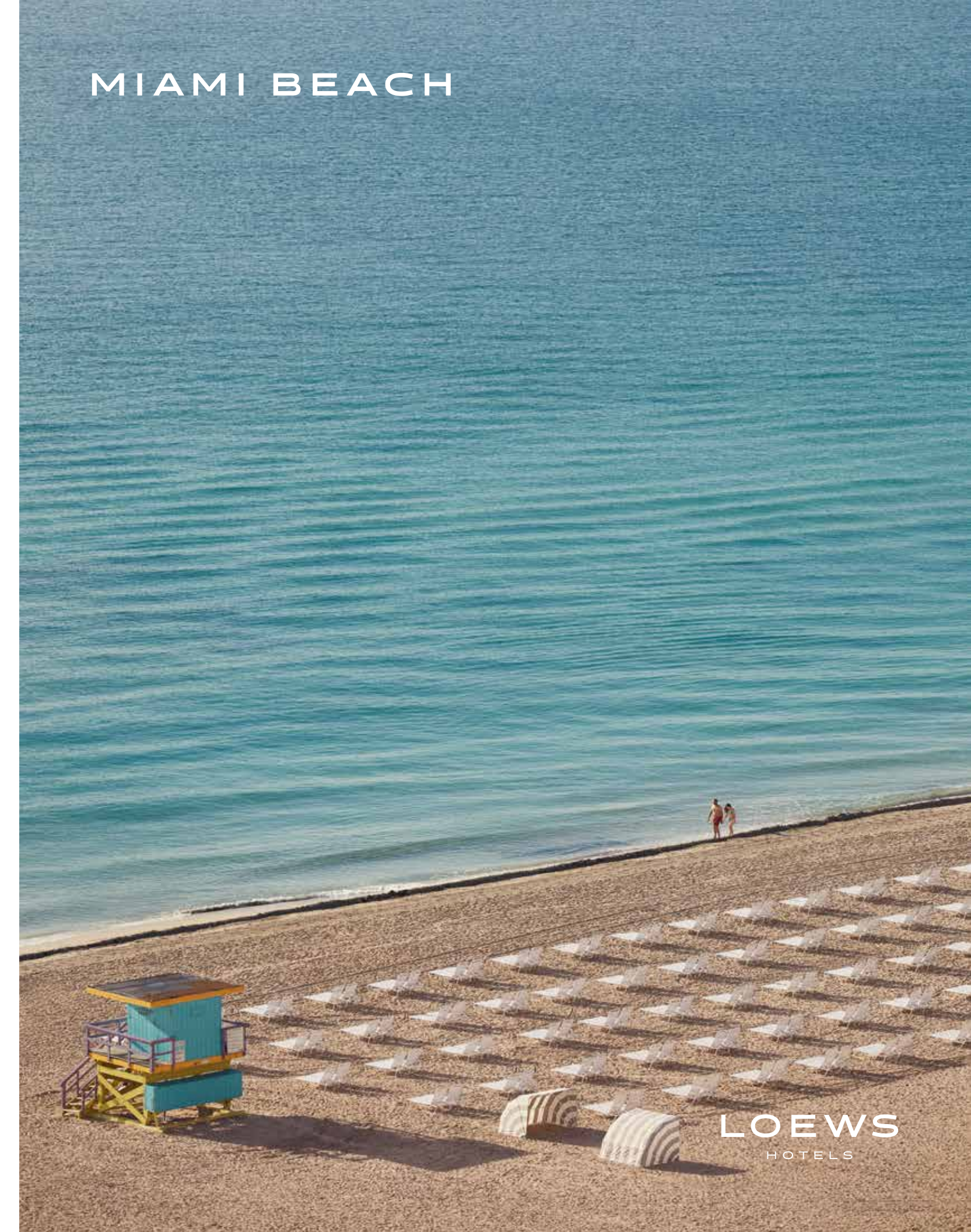
## Outdoors



Area	Dimensions (Ft./m.)	Sq. Ft.	Ceiling (Ft./m.)	Classroom	Theater	Reception	Banquet
<b>Function Areas</b>							
Americana Lawn	95 x 95 / 24.4 x 24.4	9,162				600	350
St. Moritz Lawn	64 x 93 / 23.5 x 14.6	5,976				400	120
Americana Terrace						150	100
SOAK						175	

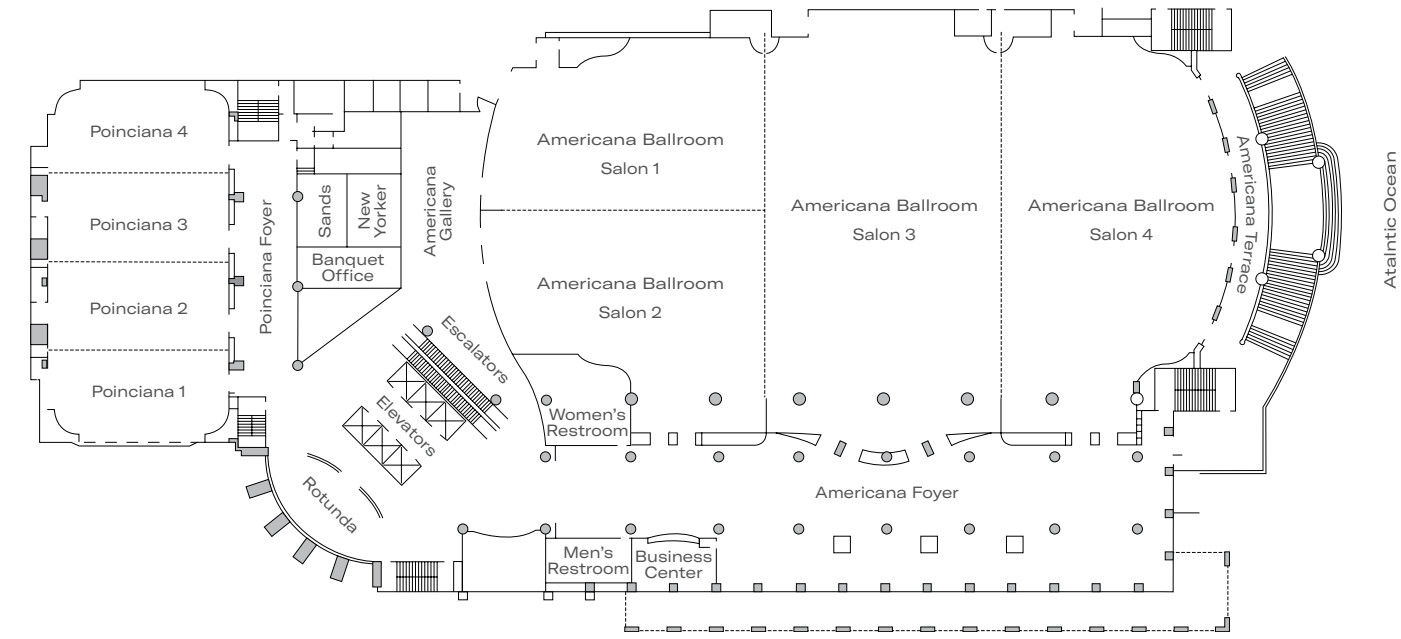


From left: Americana Lawn, SOAK cabanas and day beds

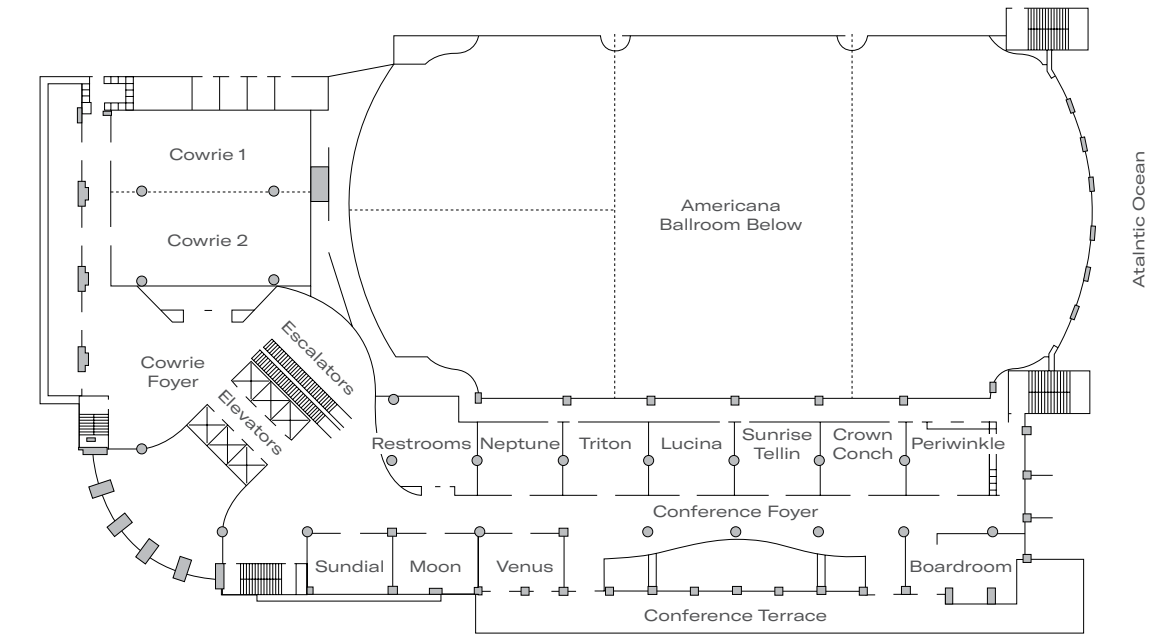




## Second Level



## Third Level



Room	Dimensions (Ft./m.)	Sq. Ft.	Ceiling (Ft./m.)	Classroom	Theater	Reception	Banquet	U-Shape	Conf.
<b>Americana Ballroom</b>									
Salons 1, 2, 3, 4	230 x 120 / 70.1 x 36.6	27,600	22 / 6.7	1,500	2,500	2,630	1,530		
Salons 1 or 2	80 x 60 / 24.4 x 18.3	4,800	22 / 6.7	215	400	450	270	57	60
Salon 3	130 x 75 / 39.6 x 22.8	9,750	22 / 6.7	600	900	800	540		
Salon 4	115 x 65 / 35 x 19.8	7,475	22 / 6.7	450	750	750	450		
Americana Foyer		7,740				600			
Americana Gallery		1,350				100			
<b>Poinciana</b>									
Poinciana 1, 2, 3, 4	114 x 55 / 16.8 x 7.6	6,270	12 / 3.7	400	640	100	360	28	32
Poinciana 1, 4	55 x 25 / 16.8 x 7.6	1,375	12 / 3.7	85	150	150	80		
Poinciana 2, 3	55 x 27 / 16.8 x 8.2	1,485	12 / 3.7	85	150	150	80		
Poinciana Foyer		1,450				125			
New Yorker, Sands	32 x 24 / 9.75 x 7.3	768	11 / 3.4	40	90	60	50	26	24
New Yorker	16 x 24 / 4.9 x 7.3	384	11 / 3.4		30	30	20	15	18
Sands	16 x 24 / 4.9 x 7.3	384	11 / 3.4		30	30	20	15	18
Rotunda		500				150	70		
<b>Exhibits</b>									
Americana 1 or 2		22					20		
Americana 3		55					47		
Americana 4		40					31		
Americana 3, 4, Foyer		19					17		
Poinciana		35					27		

Room	Dimensions (Ft./m.)	Sq. Ft.	Ceiling (Ft./m.)	Classroom	Theater	Reception	Banquet	Hollow Square	U-Shape
<b>Function Areas</b>									
Boardroom	23 x 16 / 7 x 4.9	368	12 / 3.7	Permanent boardroom table, seating for 16					
Periwinkle	25 x 23 / 7.6 x 7	575	12 / 3.7	30	50	40	30	20	22
Crown Conch	25 x 23 / 7.6 x 7	575	12 / 3.7	32	50	40	30	20	22
Sunrise Tellin	25 x 16 / 7.6 x 4.9	400	12 / 3.7	26	40	40	30	20	22
Lucina	25 x 16 / 7.6 x 4.9	400	12 / 3.7	26	40	40	30	20	22
Triton	25 x 20 / 7.6 x 6.1	500	12 / 3.7	30	40	40	30	20	22
Neptune	23 x 23 / 7 x 7	529	12 / 3.7	28	50	40	30	20	22
Sundial	25 x 19 / 7.6 x 5.8	475	12 / 3.7	26	50	40	30	20	22
Moon	26 x 18 / 7.9 x 5.5	468	12 / 3.7	26	50	40	30	20	22
Venus	26 x 15 / 7.9 x 4.6	390	12 / 3.7	26	50	40	30	20	22
Cowrie	63 x 60 / 19.2 x 18.3	3,780	11 / 3.4	150	374	250	180	20	22
Cowrie 1	63 x 24 / 19.2 x 7.3	1,512	11 / 3.4	65	150	100	80	20	22
Cowrie 2	63 x 36 / 19.2 x 10.9	2,268	11 / 3.4	80	225	150	96	20	22
Cowrie Foyer		2,200				200	100		
<b>Hospitality Parlors*</b>									
Two Bay Terrace Suite		4		710	14				
Three Bay Terrace Suite		3		1,120	20				

Top to bottom: Americana Ballroom, Executive Boardroom

\*Ideal for small breakouts. Balcony access varies from 96 sq. ft. to 675 sq. ft. Terrace Suites are large guest room parlors that connect to adjoining guestrooms in the main tower of the hotel. Pricing and furniture removal information can be obtained from your sales or service executive.