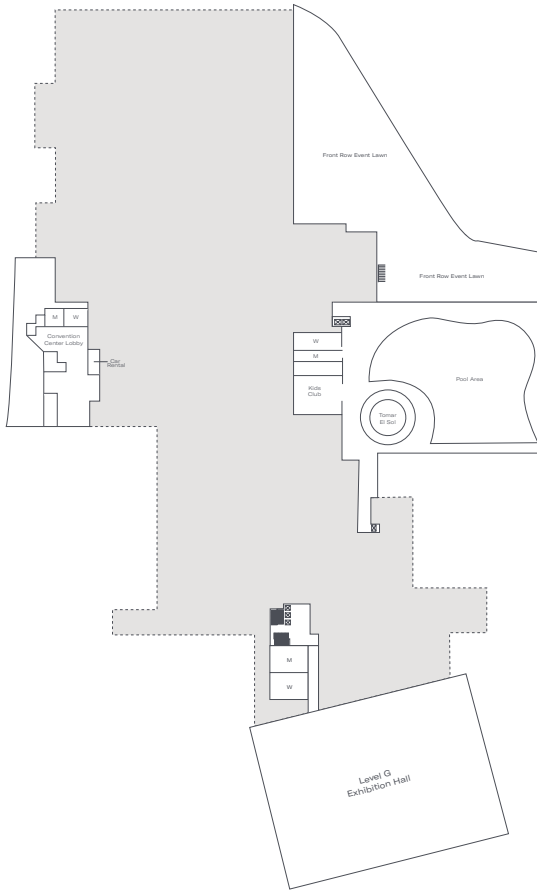
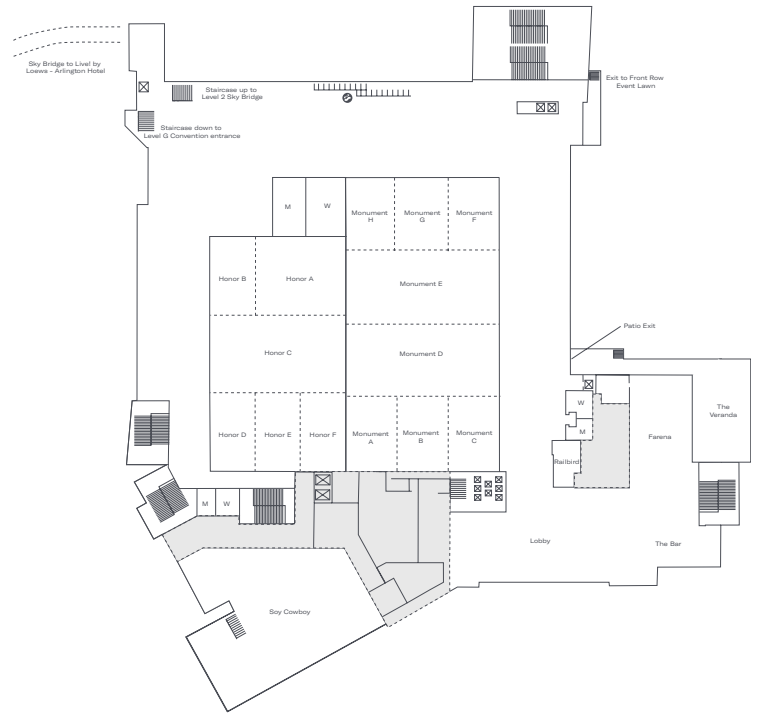


Level B and One

Level B



Level One



Venue	Dimensions (Ft.)	Sq. Ft.	Ceiling (Ft.)	Classroom	Banquet	Reception	Theater	U-Shape	Conference	Exhibits 10 x 10	Hollow Square
Lower Level											
Front Row Lawn		27,228		-	800	2,000	2,500	-	-	136	
Exhibition Hall		43,269	9'-11'	-		1,750	-	-	-	216	
Level One											
Honor Ballroom A	62' x 70'	4,371	24'3"	312	250	273	360	75	54	-	102
Honor Ballroom B	62' x 35'	2,185	24'3"	132	130	136	180	60	48	-	72
Honor Ballroom C	61' x 105'	6,547	24'3"	456	320	805	1060	120	96	-	144
Honor Ballroom D	62' x 35'	2,182	24'3"	132	130	136	180	60	48	-	72
Honor Ballroom E	62' x 35'	2,182	24'3"	132	130	136	180	60	48	-	72
Honor Ballroom F	62' x 35'	2,182	24'3"	132	120	136	180	60	48	-	78
Total Honor Ballroom	185' x 105'	19,649	24'3"	1512	1200	1824	2400	-	-	90	264
Monument Ballroom A	57' x 40'	2,333	24'3"	150	150	159	210	54	42	-	66
Monument Ballroom B	57' x 40'	2,333	24'3"	150	150	159	210	54	42	-	66
Monument Ballroom C	57' x 40'	2,333	24'3"	150	150	159	210	54	42	-	66
Monument Ballroom D	57' x 121'	7,008	24'3"	483	360	652	858	117	96	-	138
Monument Ballroom E	57' x 121'	7,008	24'3"	483	360	652	858	117	96	-	138
Monument Ballroom F	57' x 40'	2,333	24'3"	150	150	159	210	54	42	-	66
Monument Ballroom G	57' x 40'	2,333	24'3"	150	150	159	210	54	42	-	66
Monument Ballroom H	57' x 40'	2,333	24'3"	150	150	159	210	54	42	-	66
Total Monument Ballroom	228' x 120'	28,014	24'3"	2,139	1,530	2,508	3,300	-	-	140	288

Level Two

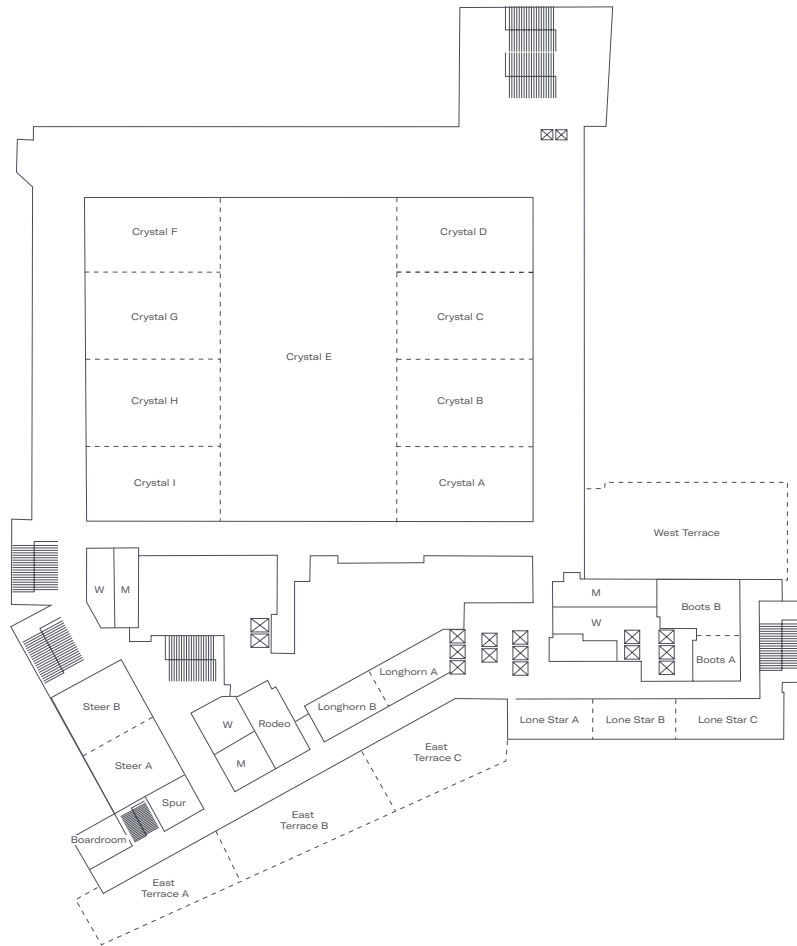
Level Two



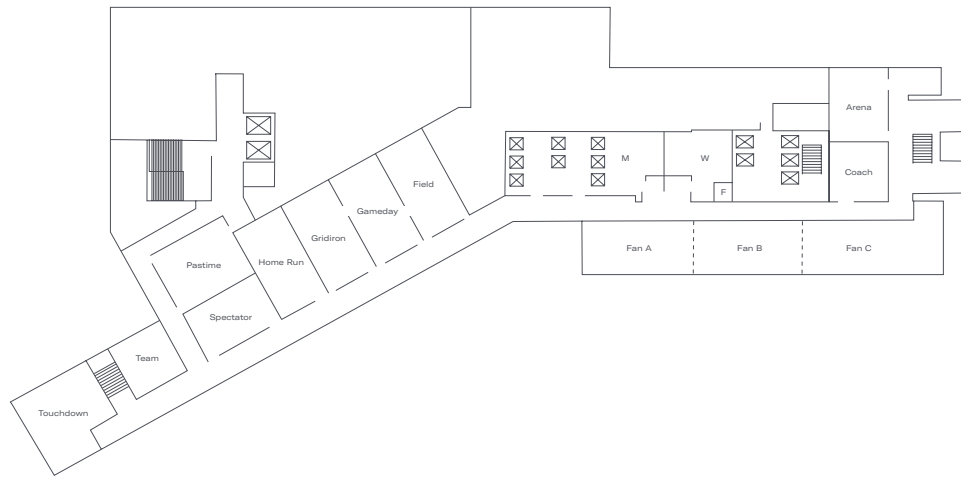
Venue	Dimensions (Ft.)	Sq. Ft.	Ceiling (Ft.)	Classroom	Banquet	Reception	Theater	U-Shape	Conference	Exhibits 10 x 10	Hollow Square
Level Two											
Beautyberry	32' x 19'	626	13' 4"	24	30	42	56	27	24	-	30
Big Bend	32' x 20'	651	13' 4"	30	30	42	56	24	18	-	30
Bluebonnet	26' x 14'	372	13' 4"	12	20	26	35	15	20	-	18
Cenizo	24' x 41'	1,017	13' 4"	54	60	75	99	30	30	-	36
Dolomite	62' x 35'	2,177	13' 4"	93	80	83	110	36	30	-	42
Limestone	40' x 25'	1,013	13' 4"	42	60	91	120	30	30	-	36
Lupine A	25' x 41'	1,032	13' 4"	42	60	91	120	30	30	-	36
Lupine B	25' x 41'	1,032	13' 4"	42	60	91	120	30	30	-	36
Lupine C	24' x 41'	1,020	13' 4"	42	60	91	120	30	30	-	36
Mockingbird	44' x 25'	1,108	13' 4"	72	60	100	132	36	36	-	42
Pavonia	42' x 25'	1,061	13' 4"	72	60	100	132	34	30	-	40
Pecan	40' x 25'	1,012	13' 4"	72	60	97	128	36	30	-	40
Post Oak A	34' x 25'	868	13' 4"	60	60	79	104	30	30	-	36
Post Oak B	36' x 25'	913	13' 4"	60	60	82	108	30	30	-	36
Post Oak C	38' x 25'	965	13' 4"	72	60	91	120	30	24	-	36
Rock Rose	26' x 23'	616	13' 4"	36	40	57	75	24	42	-	30
Sage A	53' x 45'	2,398	13' 4"	126	170	190	250	48	42	-	72
Sage B	53' x 35'	1,860	13' 4"	105	120	129	170	48	42	-	60
Sandstone	68'-6" x 32'	2,228	13' 4"	90	100	114	150	52	42	-	58
Shale	30' x 24'	728	13' 4"	35	40	42	56	27	24	-	30

Level Three and Four

Level Three



Level Four



Venue	Dimensions (Ft.)	Sq. Ft.	Ceiling (Ft.)	Classroom	Banquet	Reception	Theater	U-Shape	Conference	Exhibits 10 x 10	Hollow Square
Level Three Exterior Event Terrace											
West Terrace	104' x 56'	5,808	-	-	300	350	300	-	-	-	-
East Terrace A	33' x 75'	2,811	27'	-	120	150	220	-	-	-	-
East Terrace B	36' x 82'	2,973	27'	-	130	220	240	-	-	-	-
East Terrace C	39' x 96'	4,229	27'	-	150	220	275	-	-	-	-

Venue	Dimensions (Ft.)	Sq. Ft.	Ceiling (Ft.)	Classroom	Banquet	Reception	Theater	U-Shape	Conference	Exhibits 10 x 10	Hollow Square
Level Three											
Crystal Ballroom A	74' x 45'	3,525	24'3"	252	240	353	400	78	60	-	96
Crystal Ballroom B	74' x 52'	4,087	24'3"	294	300	395	520	81	60	-	102
Crystal Ballroom C	74' x 52'	4,087	24'3"	294	300	395	520	81	60	-	102
Crystal Ballroom D	74' x 45'	3,525	24'3"	252	240	353	400	78	60	-	96
Crystal Ballroom E	196' x 106'	20,776	24'3"	1,530	1,480	2,006	2,640	-	-	-	270
Crystal Ballroom F	74' x 45'	3,525	24'3"	252	240	353	400	78	60	-	96
Crystal Ballroom G	74' x 52'	4,087	24'3"	294	300	395	520	81	60	-	102
Crystal Ballroom H	74' x 52'	4,087	24'3"	294	300	395	520	81	60	-	102
Crystal Ballroom I	74' x 45'	3,525	24'3"	252	240	353	400	78	60	-	96
Total Crystal Ballroom	254' x 196'	51,224	24'3"	3330	3600	4712	6200	-	-	244	390
Boardroom	29' x 23'	667	13' 4"	-	-	-	-	-	16	-	-
Boots A	28' x 26'	663	13' 4"	45	50	50	66	24	18	-	30
Boots B	49' x 26'	1,435	13' 4"	54	80	110	145	42	36	-	48
Lone Star	165' x 23'	3,721	13' 4"	144	150	218	288	-	-	-	144
Lone Star A	51' x 23'	1,104	13' 4"	48	50	72	96	36	36	-	48
Lone Star B	50' x 23'	1,075	13' 4"	48	50	72	96	36	36	-	48
Lone Star C	64' x 23'	1,542	13' 4"	48	50	72	96	36	36	-	48
Longhorn	90' x 20'	1823	13' 4"	120	120	68	90	51	48	-	54
Longhorn A	47' x 20'	970	13' 4"	60	50	68	90	39	36	-	42
Longhorn B	43' x 20'	853	13' 4"	60	50	68	90	39	36	-	42
Rodeo	45' x 23'	1,045	13' 4"	63	60	83	110	30	24	-	36
Spur	23' x 21'	490	13' 4"	27	20	22	30	15	12	-	18
Steer	86' x 39'	3314	22'9"	140	170	273	360	66	78	-	78
Steer A	43' x 39'	1,634	22'9"	70	80	136	180	33	48	-	42
Steer B	43' x 39'	1,680	22'9"	70	80	136	180	33	48	-	42
Level Four											
Arena	23' x 33'	1,193	13' 4"	45	40	53	70	30	24	-	36
Coach	22' x 26'	1,037	13' 4"	26	30	38	50	24	18	-	30
Fan A	20' x 42'	1,086	13' 4"	60	60	88	117	39	36	-	42
Fan B	20' x 42'	1,047	13' 4"	60	60	88	117	39	36	-	42
Fan C	20' x 59'	1,047	13' 4"	60	60	88	117	39	36	-	42
Field	24' x 41'	824	13' 4"	63	60	83	110	30	24	-	36
Gameday	24' x 41'	1,051	13' 4"	63	60	83	110	30	24	-	36
Gridiron	24' x 41'	639	13' 4"	63	60	83	110	30	24	-	36
Home Run	24' x 41'	825	13' 4"	63	60	83	110	30	24	-	36
Pastime	29' x 33'	1,630	13' 4"	60	60	83	110	27	24	-	36
Spectator	20' x 36'	640	13' 4"	42	50	66	87	27	24	-	30
Team	25' x 22'	1,155	13' 4"	36	30	49	65	18	12	-	24
Touchdown	41' x 29'	1,347	13' 4"	51	80	95	125	30	30	-	36